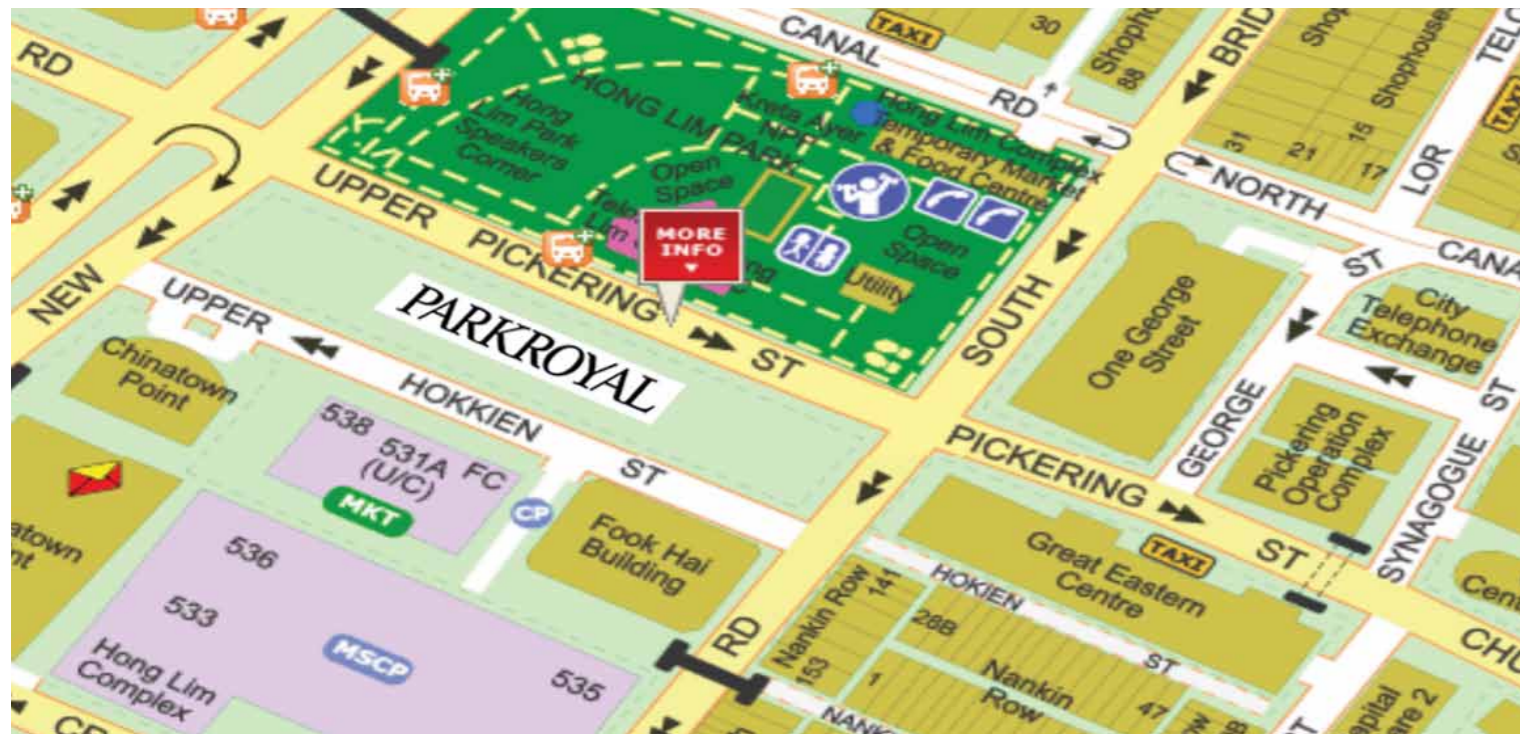


→ Our Location



Around the Hotel

- Key gateway into the Central Business District and business and financial hub at Raffles Place and Marina Bay
- 20-minute drive from Changi International Airport
- 2-minute walk from Chinatown MRT Station
- Excellent location to explore Singapore's hidden treasures; within walking distance of Singapore's ethnic enclave, Chinatown, and exciting entertainment and shopping precincts such as Raffles City, Suntec City and Bugis Junction
- Waterfront entertainment at Boat Quay and Clarke Quay are close by

Global Sales Offices

AUSTRALIA, SYDNEY

150 Day Street
Sydney, NSW 2000
Australia
Tel: +61 2 9260 3013
Fax: +61 2 9283 7899

CHINA, SHANGHAI

Room 605, K, Wah Centre
1010 Huai Hai Zhong Road
Shanghai, 200030
China
Tel: +86 21 6136 4127
Fax: +86 21 6103 3485

Corporate Office

238A Thomson Road
#08-00 Novena Square
Office Tower A
Singapore 307684
Tel: +65 6808 1180
Fax: +65 6821 8001

pphg.com



JAPAN, TOKYO

2F Kitamura Building
1-2-7 Nihombashi-Kakigara-Cho
Chuo-ku, 103-0014
Japan
Tel: +81 3 3667 6931
Fax: +81 3 3667 6932

LONDON, UK

One Hardswick Square
Wandsworth
London SW18 4AW
United Kingdom
Tel: +44 207 198 8360
Fax: +44 207 198 8406

SINGAPORE

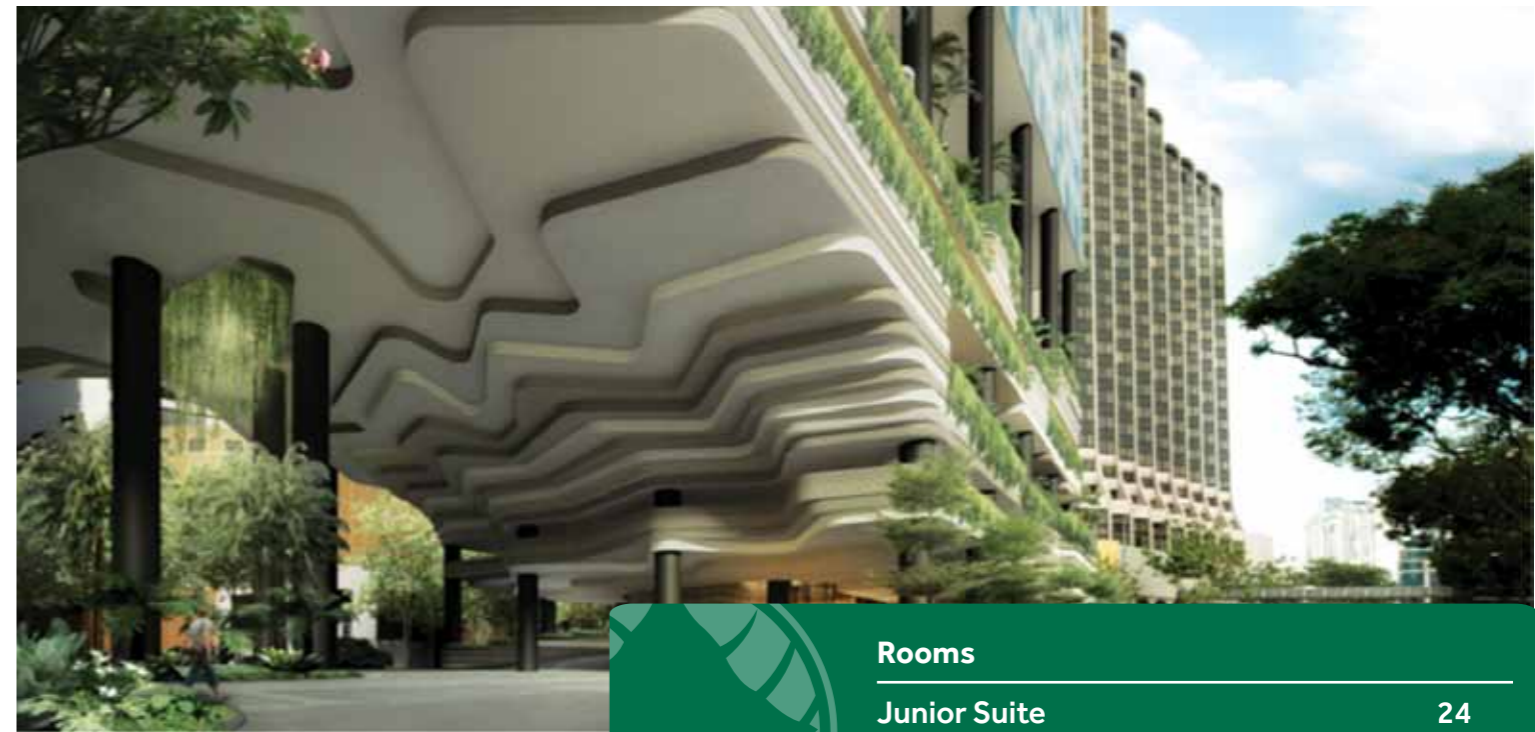
7500A Beach Road
The Plaza #04-301
Singapore 199591
Tel: +65 6508 2351
Fax: +65 6295 2762

USA, SAN FRANCISCO

177 Post Street, Suite 800
San Francisco
CA 94108
USA
Tel: +41 5 732 5818
Fax: +41 5 732 5800



→ About the Hotel



Opening mid 2012

When it opens in mid 2012, PARKROYAL on Pickering will define the metropolitan skyline with its 'hotel-in-a-garden' concept and sustainable features. Located at the key gateway into the Central Business District and financial hub at Raffles Place, and close to bustling Chinatown and waterfront entertainment along the Singapore River, the 363-room property will offer elegant and contemporary accommodation. A dedicated well-being floor will feature a therapeutic day spa, a state-of-the-art gymnasium and a jogging path. In the evening, guests will be able to enjoy amazing views of the city skyline from the rooftop bar. Expect a warm welcome from our friendly PARKROYAL people and all the help you need to get the most from what will be one of Singapore's 'greenest' hotels.

Rooms

Junior Suite	24
Standard	334
Executive Suite	4
Presidential Suite	1

Our Rooms and Suites

- Vantage views towards Singapore River, Raffles City and the Marina Centre areas
- Elegant and contemporary rooms with premium finishing
- Complimentary in-house movie channels and cable channels
- Stay connected with high speed broadband Internet access

Relax and Unwind

- Dedicated wellness floor
- State-of-the-art gymnasium
- Jogging path on the wellness floor
- Therapeutic day spa
- Pool deck

Business Support Services

- 24-hour Business Centre with full secretarial services
- 24-hour Concierge
- 24-hour Reception

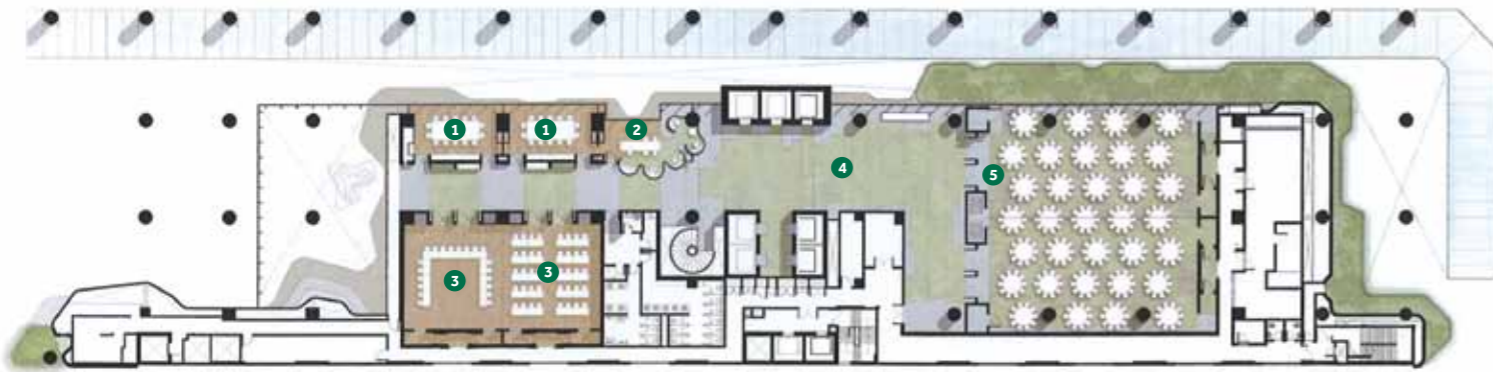
Our Restaurants and Bars

- Concept dining offering breakfast, lunch and dinner with a diverse selection of International cuisine and Asian flavours
- Bar on the ground level is the ideal spot to have a morning coffee or pre-dinner cocktails
- Take in spectacular 360 degree views of the city skyline from the roof-top bar

PARKROYAL
ON PICKERING
SINGAPORE

PARKROYAL on Pickering
Upper Pickering Street
Singapore

parkroyalhotels.com



Legend

- 1 Meeting Rooms
- 2 Business Centre
- 3 Conference Rooms
- 4 Pre-function Ballroom
- 5 Ballroom



- Equipped with the latest meeting amenities
- Professional team of event planners to assist you in executing a successful and memorable event



Spa and pool deck on 5th floor.

Legend

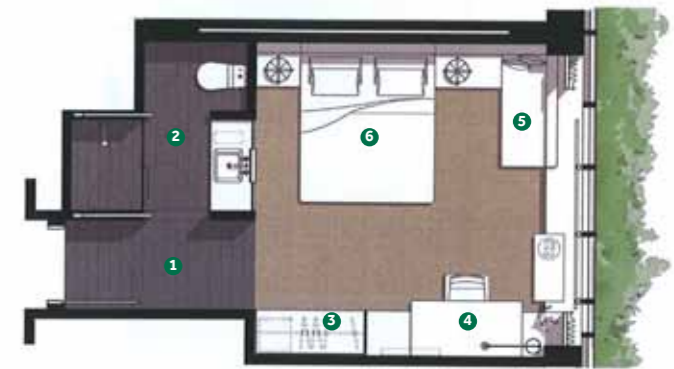
- 1 Cabana
- 2 Pool Deck
- 3 Sunset Cabana
- 4 Gym
- 5 Spa



Standard Twin

Legend

- 1 Foyer
- 2 Bathroom
- 3 Wardrobe / Minibar
- 4 Study
- 5 Bedroom



Standard King

Legend

- 1 Foyer
- 2 Bathroom
- 3 Wardrobe / Minibar
- 4 Study
- 5 Lounge
- 6 Bedroom

Junior Suite

Legend

- 1 Foyer
- 2 Minibar
- 3 Bathroom
- 4 Study
- 5 Lounge
- 6 Wardrobe / Luggage
- 7 Bedroom

